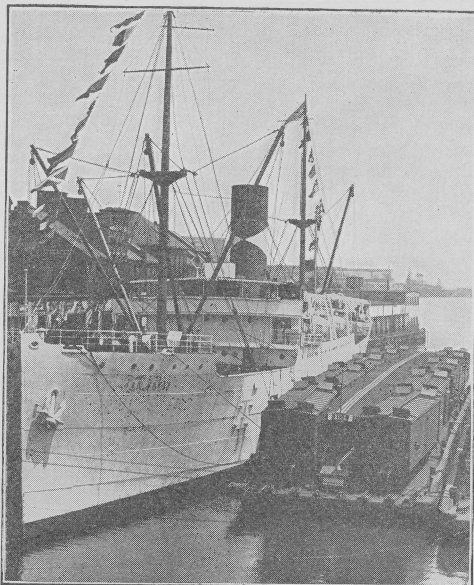


## Half a Million Banana Royals

Yes, we have SOME bananas! Carloads of 'em! The accompanying photograph shows Boston and Maine car float No. 101 standing alongside of United Fruit Company S.S. "San Bruno" at Long Wharf ready to receive 10 full carloads of bananas. At the present writing the United Fruit Company are handling three ships into Boston every week. On arrival of the steamers Boston and Maine "reefers" are sent alongside of the steamer by the car float operated by the Mystic Terminal Company. After the cars are loaded the float returns to the reconstructed float bridge at Mystic Wharf and the cars are dispatched from Boston the same day in fast freight—"Minute Man Service"—to many points in northern New



England, Canada and as far west as Detroit, Mich.

Government records show that there has been a steady growth in the consumption of bananas in this country, and the Boston and Maine has been active in furnishing facilities for the movement of this traffic from the ship to the consuming markets. There is considerable variation as to the size of the bunches, but it is estimated that an average of 500 bunches are loaded in each car, and each bunch contains approximately 100 bananas so that it may be roughly estimated that bananas loaded into the cars shown in the photograph would form the foundations for one "Banana Royal" for about 500,000 people.

—J. W. R.